

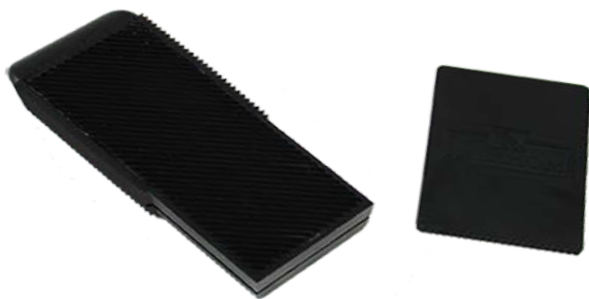
TOUCH-UP TOOLS

Perfect for Hard Wax application



Battery Melting Tool StarkTex 4.5V, 6W

Easy-to-use Battery Melting Tool for Hard Wax application. The tool is delivered with an extra nozzle and 3x AA batteries. Apply the batteries and turn on the Battery Melting Tool. After approx. 3 seconds, the tool is ready to melt hard wax into smaller defects.



Hard Wax Leveling Tool

Easy-to-use Hard Wax Leveling Tool for hard wax application. Use the tool to scrape off excess hard wax after it has been applied and hardened. The rounded edges on the Leveling Tool secure no damage to existing coating/finish.

